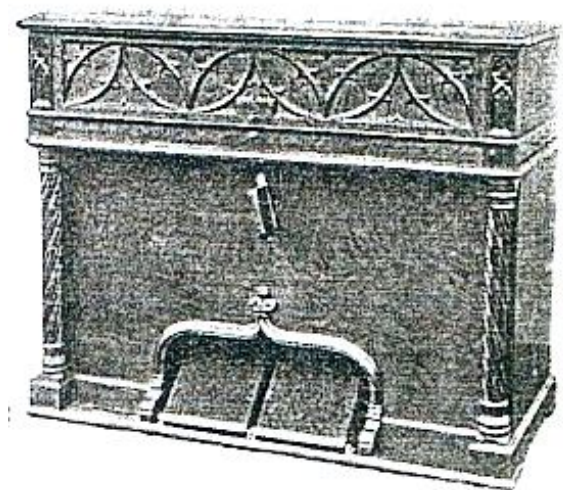
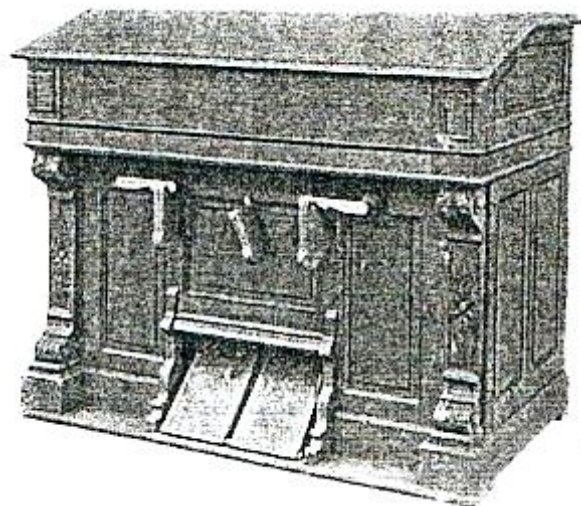


Catalogue 1912 de la
Manufacture Dumont & Cie
Les Andelys (Eure)

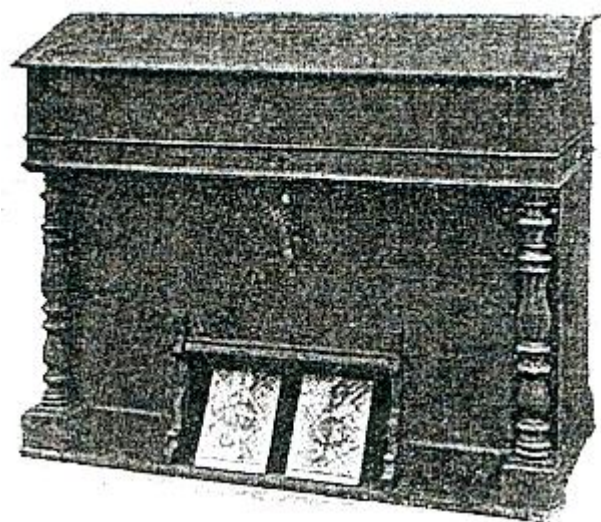
Successeurs de la Maison Dumont et Lelievre



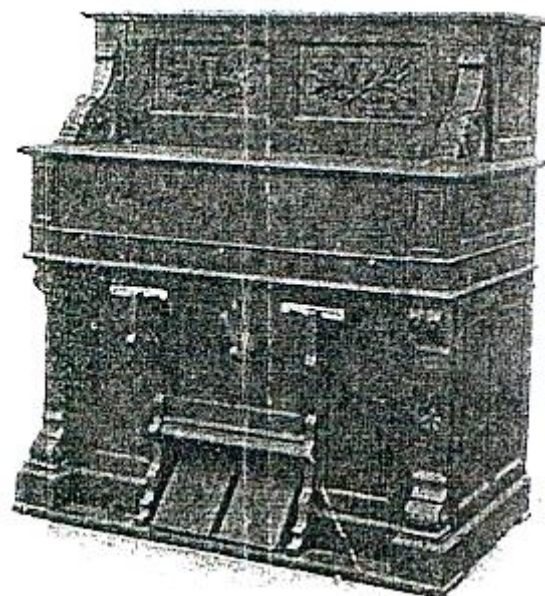
Modèle B gothique



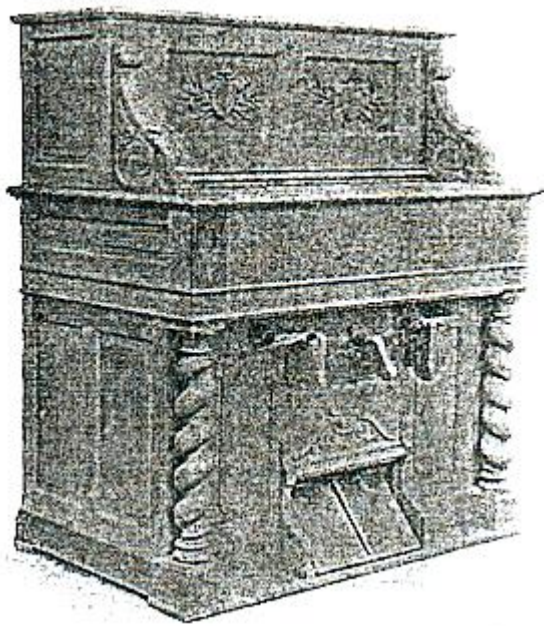
Modèle C



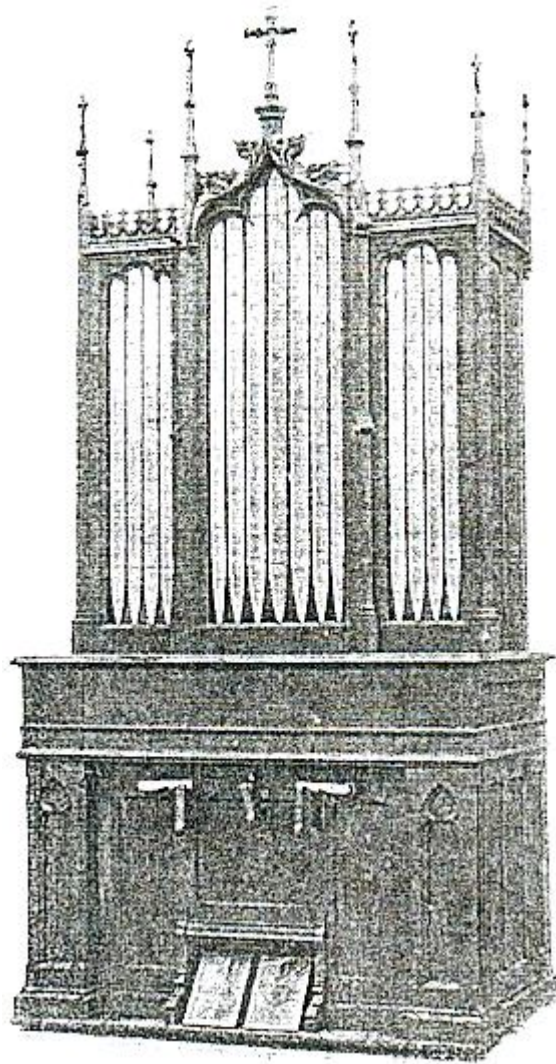
Modèle D



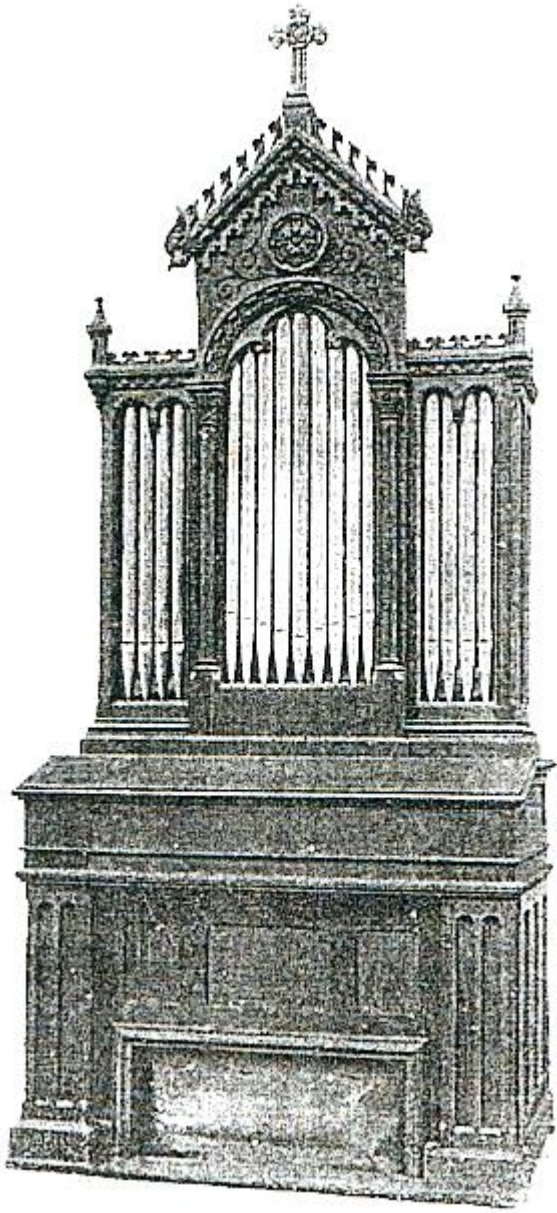
Modèle G renaissance



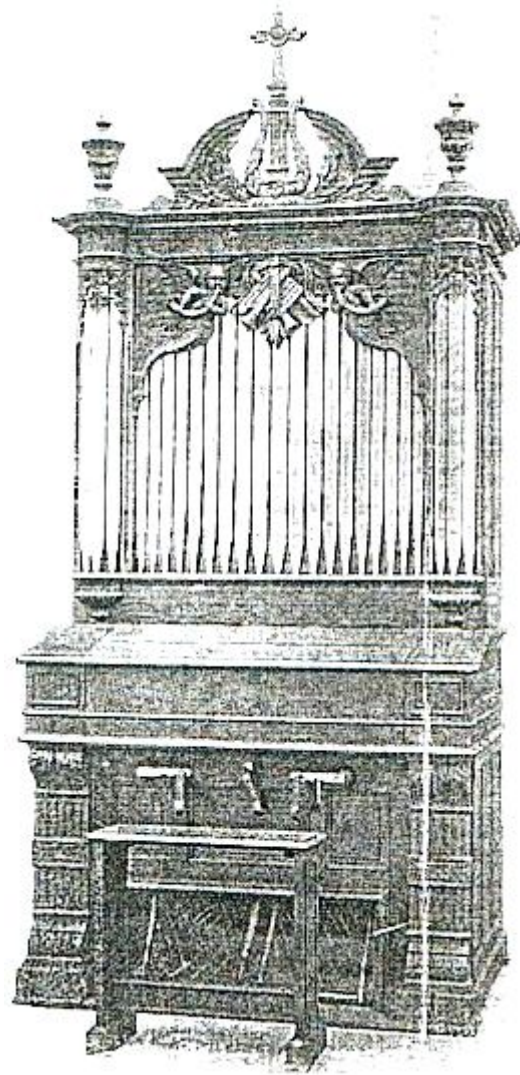
Modèle H Louis XIII riche



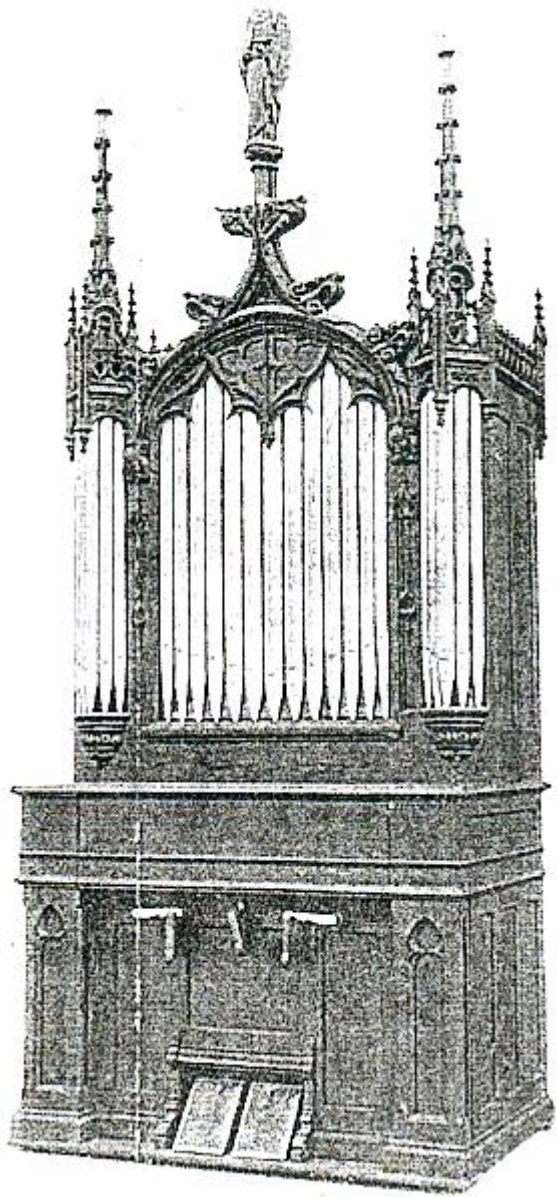
Modèle I



Modèle J



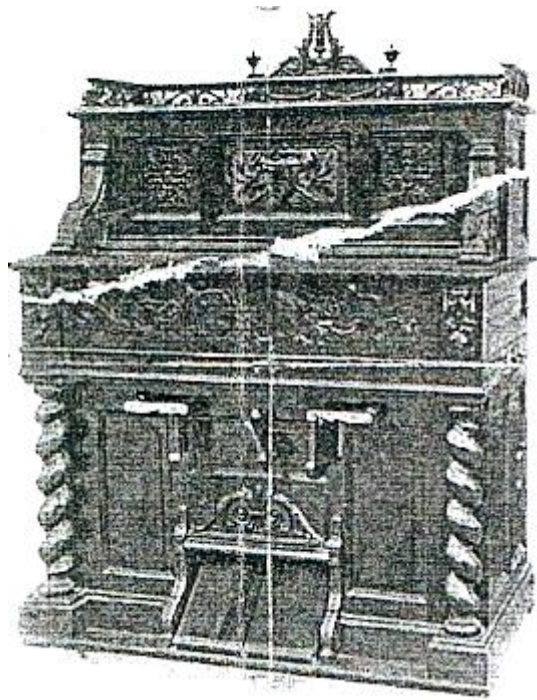
Modèle K



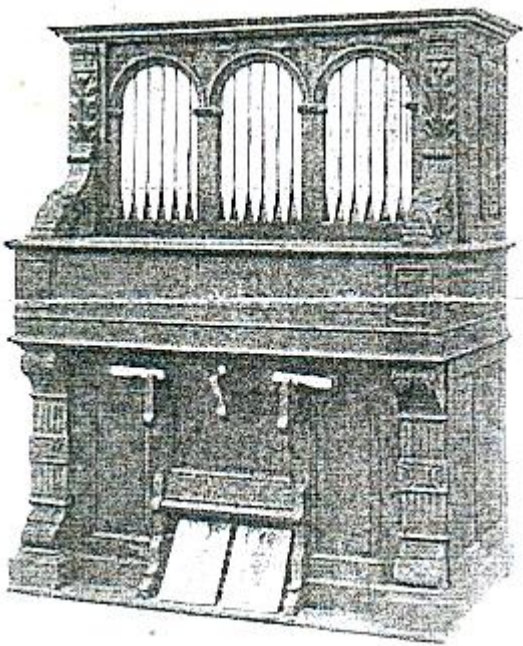
Modèle L



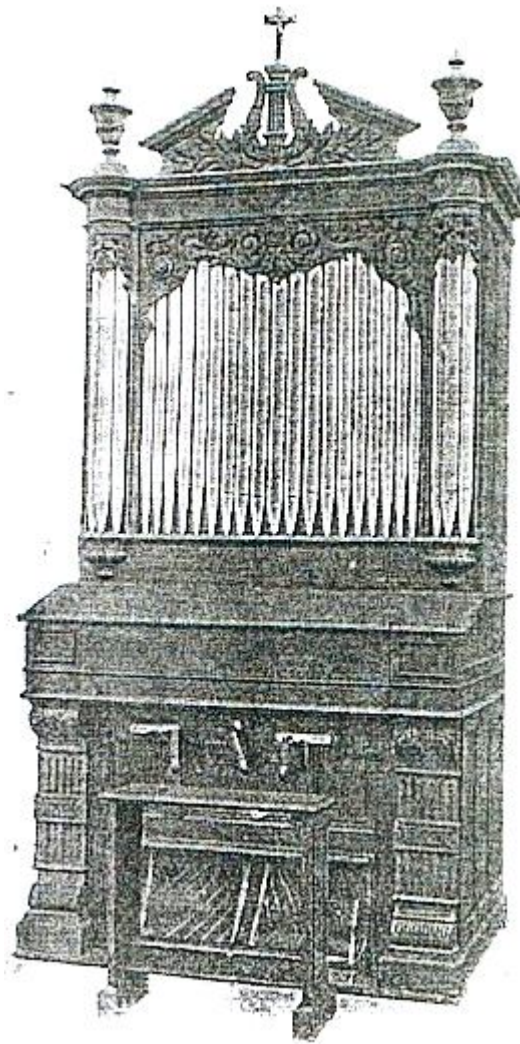
Modèle M Louis XIII extra riche



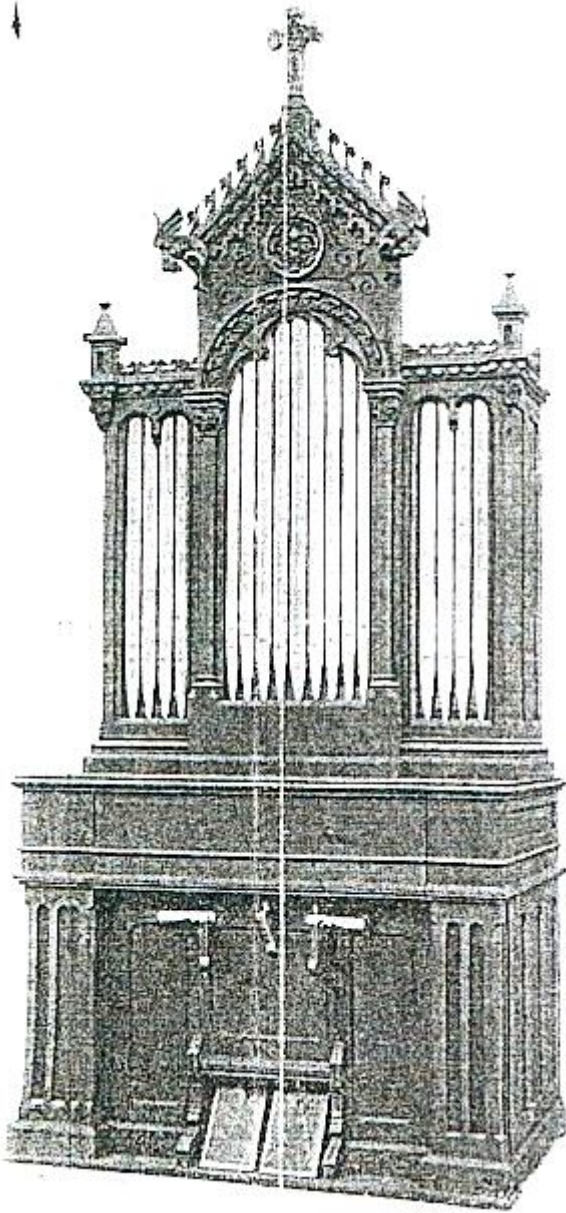
Modèle Louis XIII exposition de Milan



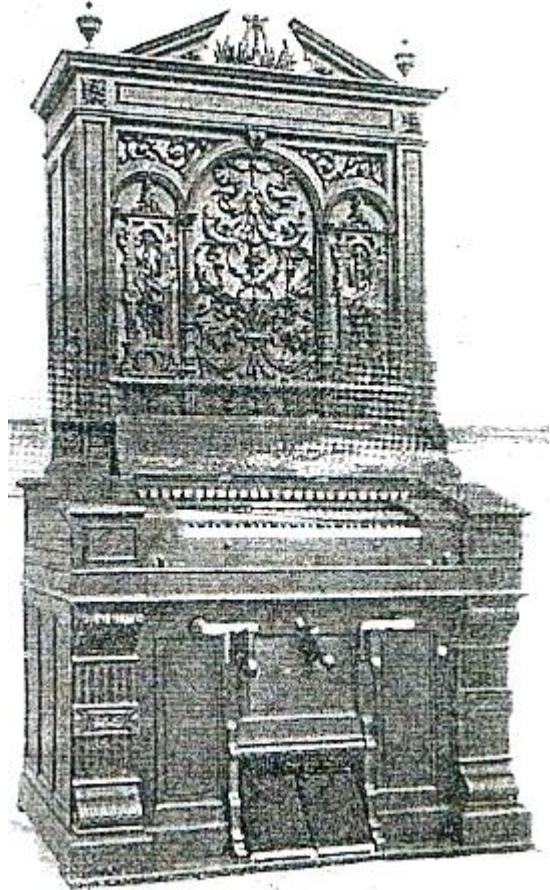
Modèle N



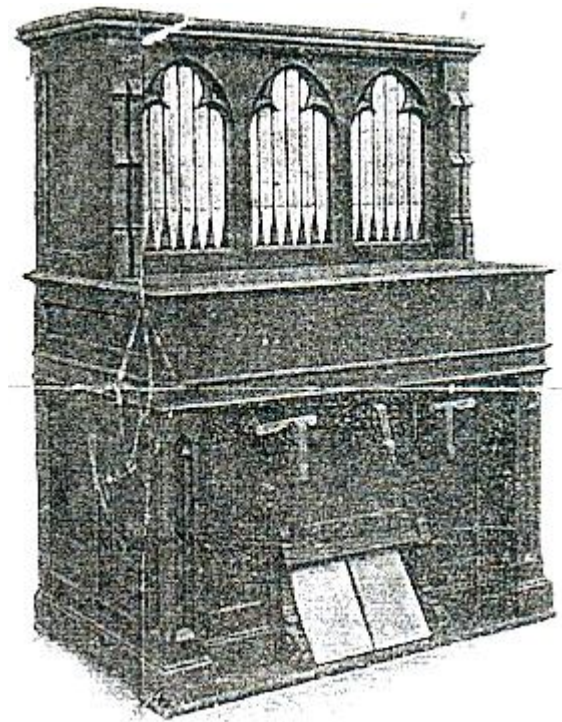
Modèle O



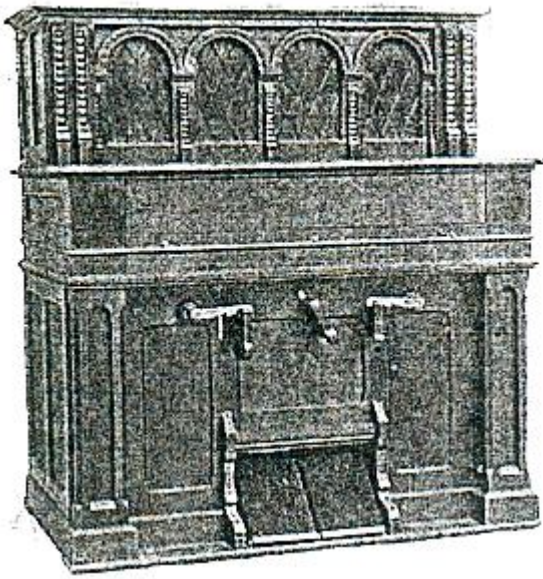
Modèle P



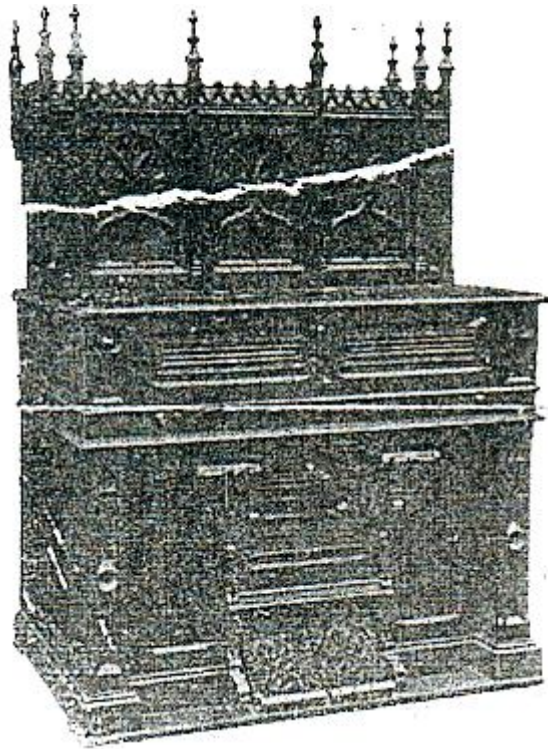
Modèle R



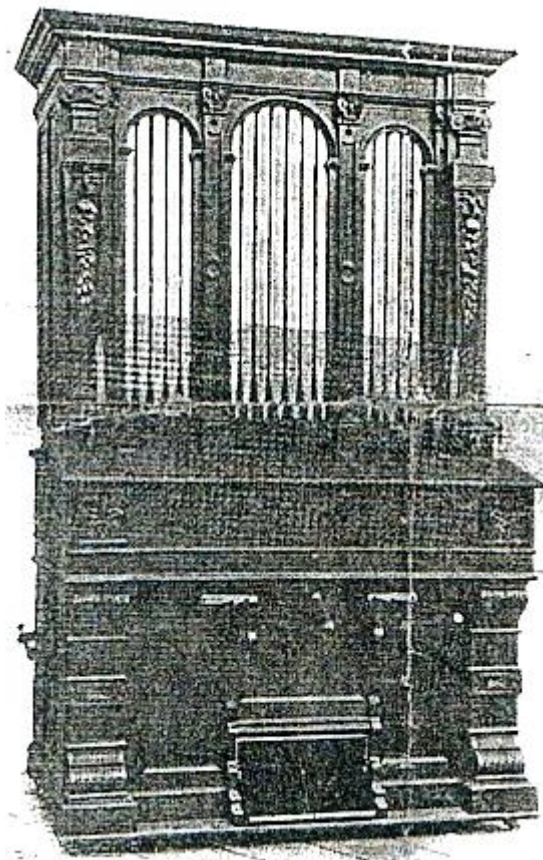
Modèle S roman ou gothique



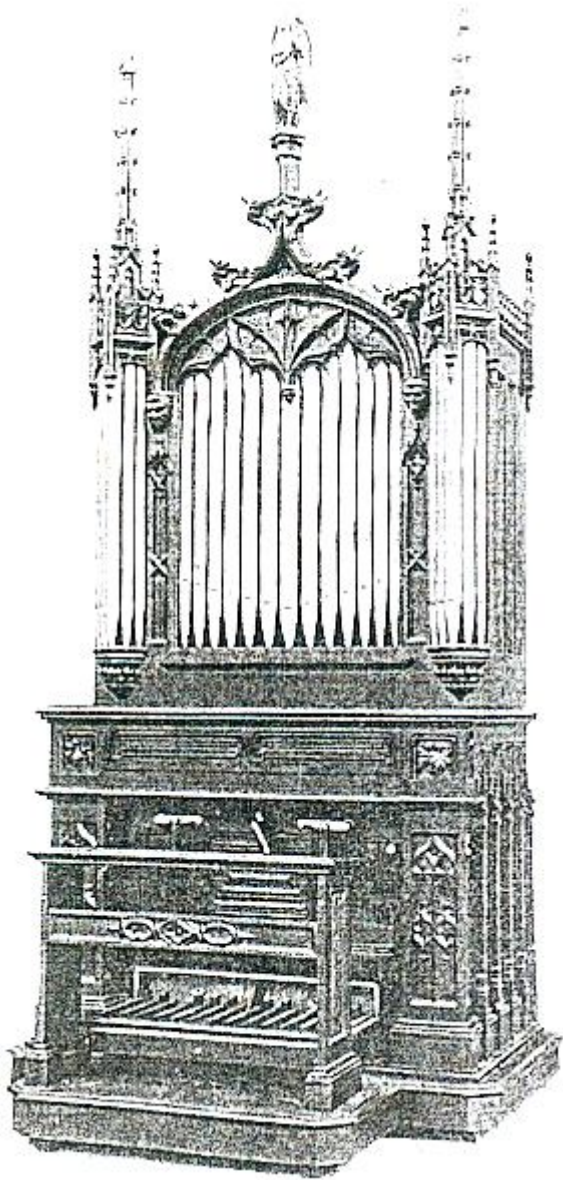
Modèle T roman ou gothique



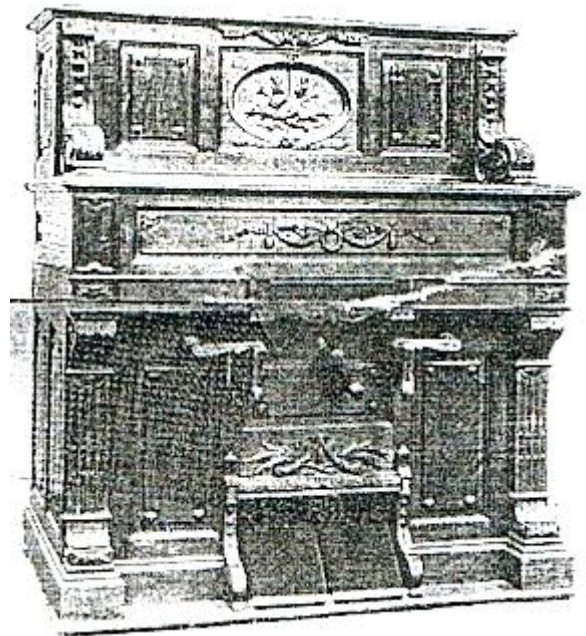
Modèle gothique exposition de Liège



Modèle U spécial



Modèle V spécial



Modèle X